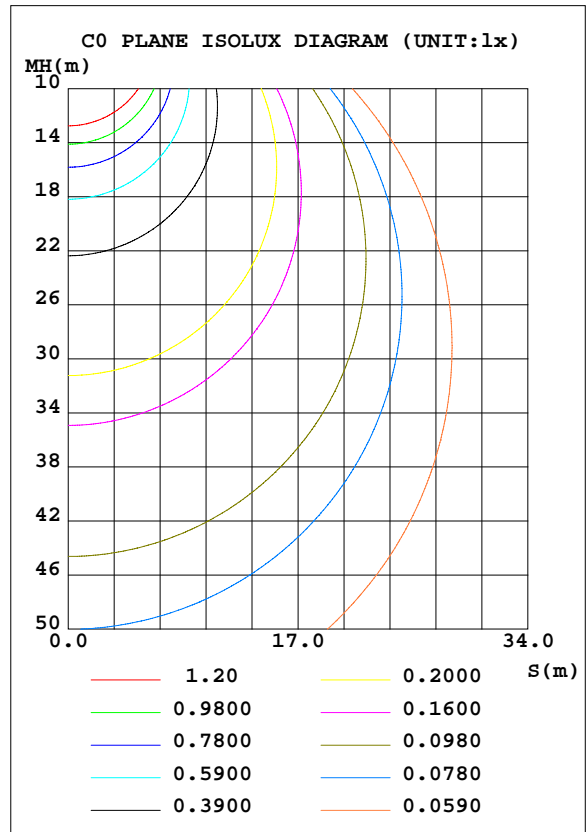
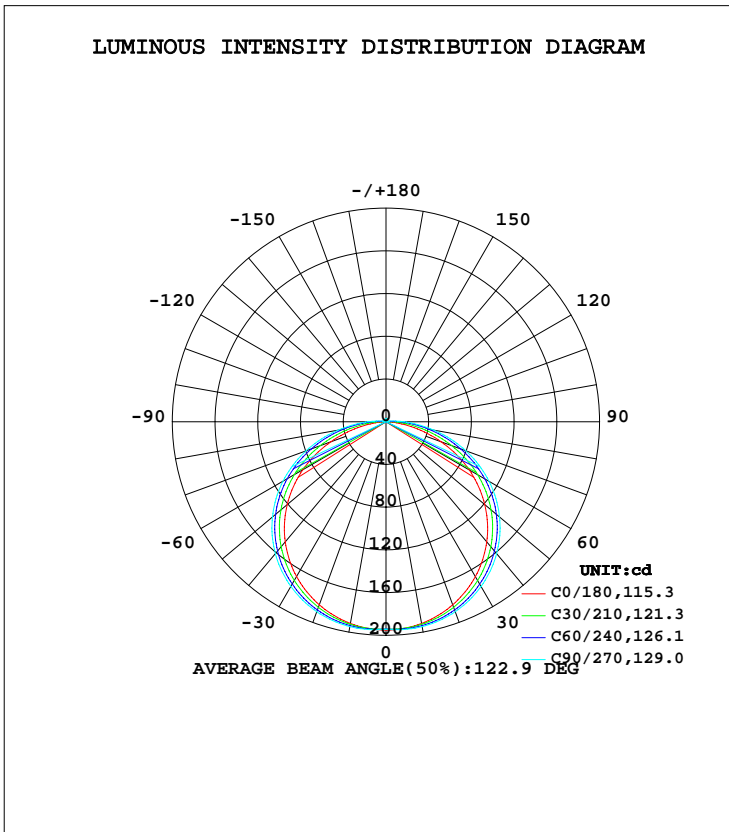


LUMINAIRE PHOTOMETRIC TEST REPORT

NAME: FL	TYPE:	WEIGHT:
SPEC.:LWF-132400W96-LP	DIM.: L=1M	SERIAL No.:
MFR.: LEDWIDE LIGHTING CO., LTD	SUR.:0.008*1	Shielding Angle:

DATA OF LAMP		PHOTOMETRIC DATA			
MODEL		Imax(cd)	195.2	S/MH(C0/180)	1.28
NOMINAL POWER(W)	7.199	LOR(%)	100.0	S/MH(C90/270)	1.36
RATED VOLTAGE(V)	24	TOTAL FLUX(lm)	651.34	η UP, DN(C0-180)	1.0,49.0
NOMINAL FLUX(lm)	651.339	CIE CLASS	DIRECT	η UP, DN(C180-360)	1.0,49.0
LAMPS INSIDE	1	η up(%)	2.0	CIBSE SHR NOM	1.50
TEST VOLTAGE(V)	24	η down(%)	98.0	CIBSE SHR MAX	1.50



C Range: 0 - 90DEG
 C Interval: 15.0DEG
 Test Speed: HIGH
 Temperature:25.3DEG
 Operators:
 Test Date:2019-01-11

γ Range: 0 - 180DEG
 γ Interval: 1.0DEG
 Test System:EVERFINE GO-2000A_V1 SYSTEM V2.0.362
 Humidity:65.0%
 Test Distance:12.226m [K=1.0000]
 Remarks:

ZONAL FLUX DIAGRAM

ZONAL FLUX DIAGRAM:

γ	C0	C45	C90	C135	C180	C225	C270	C315	γ	Φ zone	Φ total	%lum,lamp
10	191.8	193.2	194.8	193.2	191.8	193.2	194.8	193.2	0- 10	18.52	18.52	2.84,2.84
20	182.4	186.5	189.3	186.5	182.4	186.5	189.3	186.5	10- 20	53.81	72.33	11.1,11.1
30	167.5	173.9	178.0	173.9	167.5	173.9	178.0	173.9	20- 30	83.28	155.6	23.9,23.9
40	146.8	155.8	161.2	155.8	146.8	155.8	161.2	155.8	30- 40	103.2	258.8	39.7,39.7
50	120.7	132.3	138.8	132.3	120.7	132.3	138.8	132.3	40- 50	110.9	369.8	56.8,56.8
60	89.85	103.7	111.3	103.7	89.85	103.7	111.3	103.7	50- 60	104.9	474.7	72.9,72.9
70	54.90	70.74	79.59	70.74	54.90	70.74	79.59	70.74	60- 70	85.33	560.0	86,86
80	20.86	36.73	45.49	36.73	20.86	36.73	45.49	36.73	70- 80	55.05	615.1	94.4,94.4
90	0.8142	10.33	17.03	10.33	0.8142	10.33	17.03	10.33	80- 90	23.01	638.1	98,98
100	0.5933	1.242	5.072	1.242	0.5933	1.242	5.072	1.242	90-100	4.766	642.9	98.7,98.7
110	1.032	0.7822	1.053	0.7822	1.032	0.7822	1.053	0.7822	100-110	1.219	644.1	98.9,98.9
120	1.422	1.236	1.175	1.236	1.422	1.236	1.175	1.236	110-120	1.035	645.1	99,99
130	1.751	1.681	1.492	1.681	1.751	1.681	1.492	1.681	120-130	1.301	646.4	99.2,99.2
140	1.954	2.049	1.899	2.049	1.954	2.049	1.899	2.049	130-140	1.418	647.8	99.5,99.5
150	2.173	2.392	2.165	2.392	2.173	2.392	2.165	2.392	140-150	1.347	649.2	99.7,99.7
160	2.415	2.642	2.493	2.642	2.415	2.642	2.493	2.642	150-160	1.122	650.3	99.8,99.8
170	2.735	2.869	2.775	2.869	2.735	2.869	2.775	2.869	160-170	0.7540	651.1	100,100
180	3.041	3.080	3.189	3.080	3.041	3.080	3.189	3.080	170-180	0.2779	651.3	100,100
DEG	LUMINOUS INTENSITY:cd									UNIT:lm		

Conical surface Flux(90deg): 314.19 lm

%lum = 48.2%
%lamp = 48.2%

Conical surface Flux(120deg): 474.71 lm

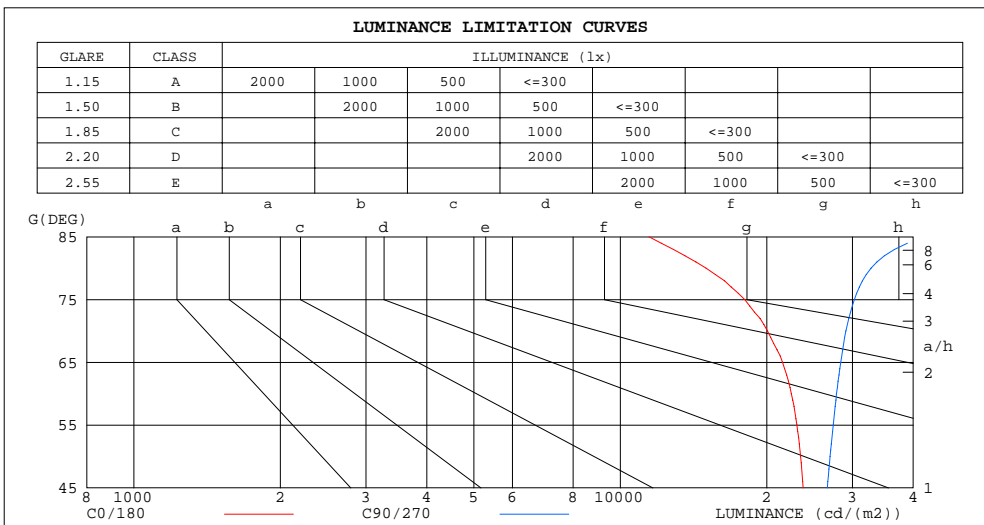
%lum = 72.9%
%lamp = 72.9%

C Range: 0 - 90DEG
C Interval: 15.0DEG
Test Speed: HIGH
Temperature:25.3DEG
Operators:
Test Date:2019-01-11

γ Range: 0 - 180DEG
γ Interval: 1.0DEG
Test System:EVERFINE GO-2000A_V1 SYSTEM V2.0.362
Humidity:65.0%
Test Distance:12.226m [K=1.0000]
Remarks:

LUMINANCE LIMITATION CURVES

NAME: FL	TYPE:	WEIGHT:
SPEC.:LWF-132400W96-LP	DIM.: L=1M	SERIAL No.:
MFR.: LEDWIDE LIGHTING CO., LTD	SUR.:0.008*1	Shielding Angle:



LUMINANCE cd/(m2)		
G(DEG)	C0/180	C90/270
85	11451	42199
80	15015	32749
75	18017	30280
70	20064	29089
65	21548	28379
60	22462	27824
55	23065	27388
50	23480	26994
45	23759	26631

C Range: 0 - 90DEG
 C Interval: 15.0DEG
 Test Speed: HIGH
 Temperature:25.3DEG
 Operators:
 Test Date:2019-01-11

γ Range: 0 - 180DEG
 γ Interval: 1.0DEG
 Test System:EVERFINE GO-2000A_V1 SYSTEM V2.0.362
 Humidity:65.0%
 Test Distance:12.226m [K=1.0000]
 Remarks:

WEC AND CCEC

NAME: FL	TYPE:	WEIGHT:
SPEC.:LWF-132400W96-LP	DIM.: L=1M	SERIAL No.:
MFR.: LEDWIDE LIGHTING CO., LTD	SUR.:0.008*1	Shielding Angle:

ρcc	80%			70%			50%			30%			10%			0
ρw	50%	30%	10%	50%	30%	10%	50%	30%	10%	50%	30%	10%	50%	30%	10%	0
ρfc	20%			20%			20%			20%			20%			0
RCR	RCR:Room Cavity Ratio						Wall Exitance Coefficients(WEC)									
0.0																
1.0	.338	.192	.061	.331	.189	.060	.316	.181	.058	.303	.175	.056	.290	.168	.054	
2.0	.310	.170	.052	.304	.167	.052	.291	.162	.050	.279	.156	.049	.268	.151	.048	
3.0	.284	.151	.045	.277	.149	.045	.266	.144	.044	.255	.140	.043	.245	.136	.042	
4.0	.259	.135	.040	.254	.133	.039	.244	.129	.039	.234	.126	.038	.225	.122	.037	
5.0	.238	.121	.035	.233	.120	.035	.224	.117	.034	.216	.114	.034	.208	.111	.033	
6.0	.220	.110	.032	.216	.109	.031	.207	.106	.031	.200	.104	.031	.193	.101	.030	
7.0	.204	.101	.029	.200	.100	.028	.193	.097	.028	.186	.095	.028	.179	.093	.027	
8.0	.190	.093	.026	.186	.092	.026	.180	.090	.026	.174	.088	.025	.168	.086	.025	
9.0	.178	.086	.024	.174	.085	.024	.168	.083	.024	.163	.082	.023	.158	.080	.023	
10.0	.167	.080	.022	.164	.079	.022	.158	.078	.022	.153	.076	.022	.148	.075	.021	

ρcc	80%			70%			50%			30%			10%			0
ρw	50%	30%	10%	50%	30%	10%	50%	30%	10%	50%	30%	10%	50%	30%	10%	0
ρfc	20%			20%			20%			20%			20%			0
RCR	RCR:Room Cavity Ratio						Ceiling Cavity Exitance Coefficients(CCEC)									
0.0	.206	.206	.206	.176	.176	.176	.120	.120	.120	.069	.069	.069	.022	.022	.022	
1.0	.198	.171	.148	.169	.147	.127	.116	.101	.088	.067	.059	.051	.021	.019	.017	
2.0	.190	.148	.111	.163	.127	.096	.112	.088	.067	.064	.051	.039	.021	.017	.013	
3.0	.183	.130	.088	.157	.112	.076	.108	.078	.054	.062	.046	.032	.020	.015	.010	
4.0	.175	.117	.073	.150	.101	.063	.103	.071	.044	.060	.041	.026	.019	.013	.009	
5.0	.168	.107	.062	.144	.092	.054	.099	.065	.038	.057	.038	.023	.019	.012	.007	
6.0	.160	.099	.054	.138	.085	.047	.095	.060	.033	.055	.035	.020	.018	.011	.007	
7.0	.153	.092	.049	.132	.080	.042	.091	.056	.030	.053	.033	.018	.017	.011	.006	
8.0	.147	.086	.044	.126	.075	.039	.087	.052	.027	.051	.031	.016	.016	.010	.005	
9.0	.141	.081	.041	.121	.070	.036	.084	.049	.025	.049	.029	.015	.016	.010	.005	
10.0	.135	.077	.038	.116	.067	.033	.081	.047	.024	.047	.028	.014	.015	.009	.005	

C Range: 0 - 90DEG
 C Interval: 15.0DEG
 Test Speed: HIGH
 Temperature:25.3DEG
 Operators:
 Test Date:2019-01-11

γ Range: 0 - 180DEG
 γ Interval: 1.0DEG
 Test System:EVERFINE GO-2000A_V1 SYSTEM V2.0.362
 Humidity:65.0%
 Test Distance:12.226m [K=1.0000]
 Remarks:

UGR(Unified Glare Rating) Table

NAME: FL		TYPE:					WEIGHT:				
SPEC.:LWF-132400W96-LP		DIM.: L=1M					SERIAL No.:				
MFR.: LEDWIDE LIGHTING CO., LTD		SUR.:0.008*1					Shielding Angle:				
ceiling/cavity	0.7	0.7	0.5	0.5	0.3	0.7	0.7	0.5	0.5	0.3	
walls	0.5	0.3	0.5	0.3	0.3	0.5	0.3	0.5	0.3	0.3	
working plane	0.2	0.2	0.2	0.2	0.2	0.2	0.2	0.2	0.2	0.2	
Room dimensions	Viewed crosswise					Viewed endwise					
x = 2H y = 2H	25.2	26.7	25.5	27.0	27.2	26.0	27.5	26.3	27.8	28.0	
3H	26.7	28.1	27.0	28.4	28.7	27.9	29.3	28.2	29.6	29.9	
4H	27.3	28.6	27.6	28.9	29.2	28.8	30.2	29.2	30.5	30.8	
6H	27.6	28.9	28.0	29.2	29.6	29.6	30.9	30.0	31.2	31.6	
8H	27.7	29.0	28.1	29.3	29.6	30.0	31.3	30.4	31.6	31.9	
12H	27.8	29.0	28.1	29.3	29.7	30.4	31.6	30.7	31.9	32.3	
4H 2H	26.0	27.4	26.3	27.6	28.0	26.6	27.9	26.9	28.2	28.5	
3H	27.7	28.9	28.1	29.3	29.6	28.7	29.9	29.1	30.3	30.6	
4H	28.4	29.5	28.8	29.9	30.3	29.8	30.9	30.2	31.2	31.6	
6H	28.9	29.9	29.4	30.3	30.7	30.8	31.7	31.2	32.1	32.5	
8H	29.1	30.0	29.5	30.4	30.8	31.2	32.1	31.7	32.5	33.0	
12H	29.2	30.0	29.6	30.4	30.9	31.7	32.5	32.1	32.9	33.4	
8H 4H	28.9	29.8	29.3	30.2	30.7	30.1	31.0	30.5	31.4	31.8	
6H	29.6	30.4	30.1	30.8	31.3	31.3	32.0	31.7	32.5	32.9	
8H	29.9	30.5	30.4	31.0	31.5	31.9	32.5	32.3	33.0	33.5	
12H	30.0	30.6	30.5	31.1	31.6	32.5	33.1	33.0	33.6	34.1	
12H 4H	29.0	29.8	29.4	30.2	30.7	30.1	30.9	30.5	31.3	31.8	
6H	29.8	30.5	30.3	30.9	31.4	31.3	32.0	31.8	32.5	33.0	
8H	30.1	30.7	30.6	31.2	31.7	32.0	32.6	32.5	33.1	33.6	
Variations with the observer position at spacings:											
S = 1.0H	+ 0.1 / - 0.2					+ 0.1 / - 0.1					
1.5H	+ 0.2 / - 0.4					+ 0.2 / - 0.3					
2.0H	+ 0.2 / - 0.5					+ 0.2 / - 0.3					

CIE Pub.117, 651.3 lm Total Lamp Luminous Flux Correct (8log(F/F0) = -1.5)

C Range: 0 - 90DEG
 C Interval: 15.0DEG
 Test Speed: HIGH
 Temperature:25.3DEG
 Operators:
 Test Date:2019-01-11

γ Range: 0 - 180DEG
 γ Interval: 1.0DEG
 Test System:EVERFINE GO-2000A_V1 SYSTEM V2.0.362
 Humidity:65.0%
 Test Distance:12.226m [K=1.0000]
 Remarks:

UTILIZATION FACTORS TABLE

NAME: FL	TYPE:	WEIGHT:
SPEC.:LWF-132400W96-LP	DIM.: L=1M	SERIAL No.:
MFR.: LEDWIDE LIGHTING CO., LTD	SUR.:0.008*1	Shielding Angle:

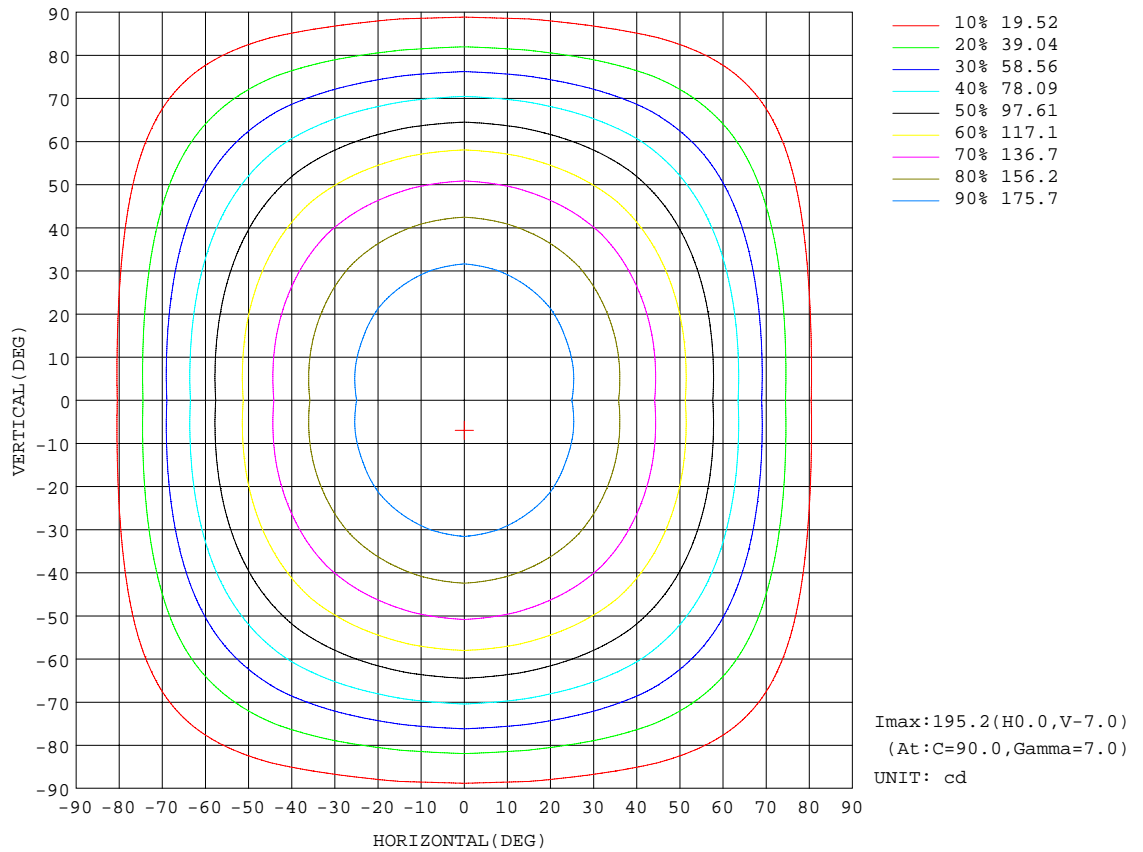
REFLECTANCE										
Ceiling	0.8	0.8	0.8	0.7	0.7	0.7	0.5	0.5	0.5	0
Walls	0.7	0.5	0.3	0.7	0.5	0.3	0.7	0.5	0.3	0
Working plane	0.2	0.2	0.2	0.2	0.2	0.2	0.2	0.2	0.2	0
ROOM INDEX	UTILIZATION FACTORS(PERCENT) $k(RI) \times RCR = 5$									
k = 0.60	55	43	36	54	42	35	53	42	35	29
0.80	65	52	45	63	52	45	62	51	44	37
1.00	73	61	53	72	61	53	69	62	53	45
1.25	80	69	61	78	68	61	76	66	60	52
1.50	85	75	67	83	74	66	80	72	65	57
2.00	92	83	76	90	82	75	86	79	73	65
2.50	96	88	81	94	86	80	90	84	78	69
3.00	100	92	86	98	91	85	93	88	83	74
4.00	104	98	93	102	96	91	97	92	88	79
5.00	107	101	97	104	99	95	99	95	92	82
ROOM INDEX	UF(total)									Direct
According to DIN EN 13032-2 2004			Suspended				SHRNOM = 1.25			

C Range: 0 - 90DEG
 C Interval: 15.0DEG
 Test Speed: HIGH
 Temperature:25.3DEG
 Operators:
 Test Date:2019-01-11

γ Range: 0 - 180DEG
 γ Interval: 1.0DEG
 Test System:EVERFINE GO-2000A_V1 SYSTEM V2.0.362
 Humidity:65.0%
 Test Distance:12.226m [K=1.0000]
 Remarks:

ISOCANDELA DIAGRAM

NAME: FL	TYPE:	WEIGHT:
SPEC.: LWF-132400W96-LP	DIM.: L=1M	SERIAL No.:
MFR.: LEDWIDE LIGHTING CO., LTD	SUR.: 0.008*1	Shielding Angle:

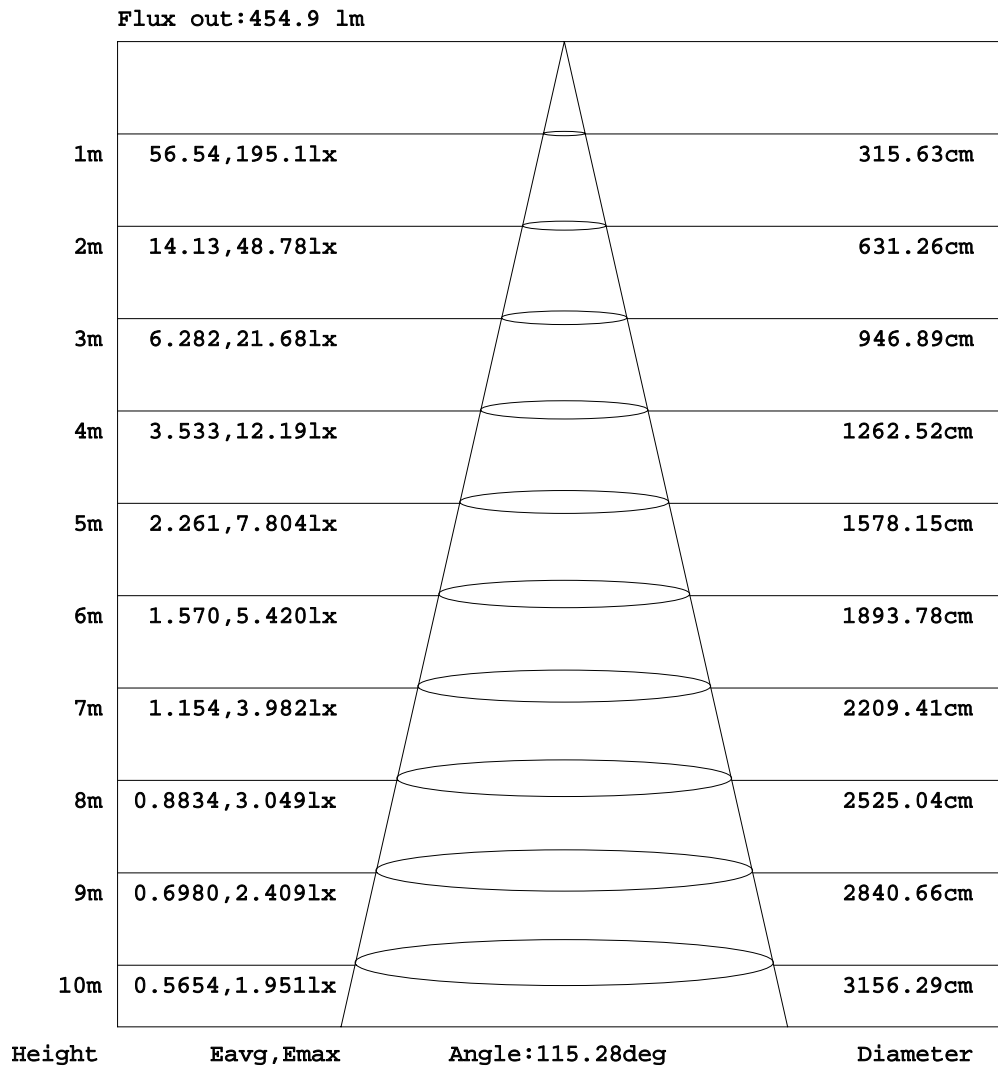


C Range: 0 - 90DEG
C Interval: 15.0DEG
Test Speed: HIGH
Temperature: 25.3DEG
Operators:
Test Date: 2019-01-11

γ Range: 0 - 180DEG
γ Interval: 1.0DEG
Test System: EVERFINE GO-2000A_V1 SYSTEM V2.0.362
Humidity: 65.0%
Test Distance: 12.226m [K=1.0000]
Remarks:

AAI Figure

NAME: FL	TYPE:	WEIGHT:
SPEC.:LWF-132400W96-LP	DIM.: L=1M	SERIAL No.:
MFR.: LEDWIDE LIGHTING CO., LTD	SUR.:0.008*1	Shielding Angle:

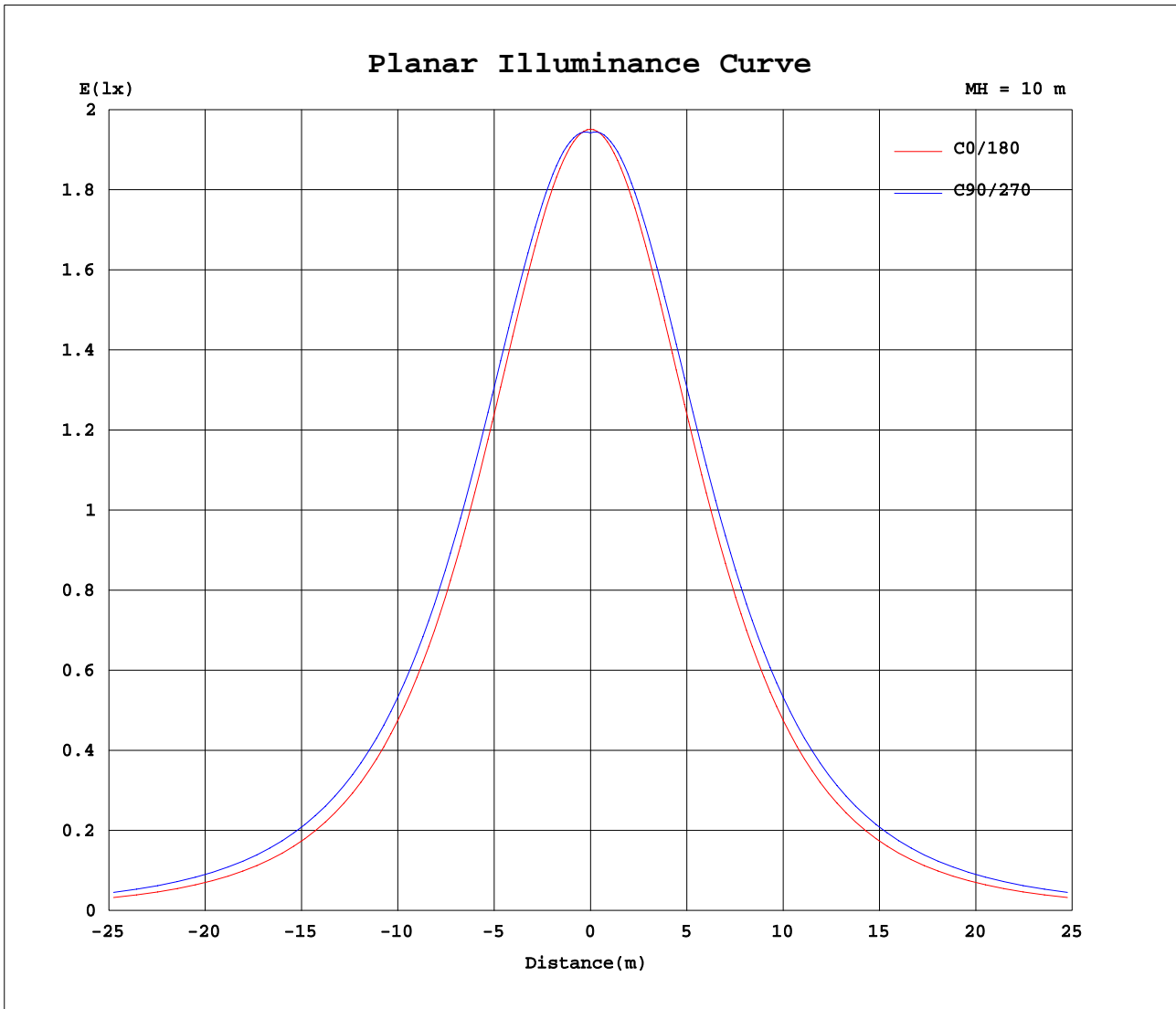


Note:The Curves indicate the illuminated area and the average illumination when the luminaire is at different distance.

C Range: 0 - 90DEG
 C Interval: 15.0DEG
 Test Speed: HIGH
 Temperature:25.3DEG
 Operators:
 Test Date:2019-01-11

γ Range: 0 - 180DEG
 γ Interval: 1.0DEG
 Test System:EVERFINE GO-2000A_V1 SYSTEM V2.0.362
 Humidity:65.0%
 Test Distance:12.226m [K=1.0000]
 Remarks:

Planar Illuminance Curve



C Range: 0 - 90DEG
 C Interval: 15.0DEG
 Test Speed: HIGH
 Temperature: 25.3DEG
 Operators:
 Test Date: 2019-01-11

γ Range: 0 - 180DEG
 γ Interval: 1.0DEG
 Test System: EVERFINE GO-2000A_V1 SYSTEM V2.0.362
 Humidity: 65.0%
 Test Distance: 12.226m [K=1.0000]
 Remarks:

LUMINOUS DISTRIBUTION INTENSITY DATA

NAME: FL	TYPE:	WEIGHT:
SPEC.:LWF-132400W96-LP	DIM.: L=1M	SERIAL No.:
MFR.: LEDWIDE LIGHTING CO., LTD	SUR.:0.008*1	Shielding Angle:

Table--1

UNIT: cd

C(DEG) γ (DEG)	0	15	30	45	60	75	90	105	120	135	150	165	180	195	210	225	240	255	270
0	195	195	194	194	194	194	194	194	194	194	194	195	195	195	194	194	194	194	194
5	194	194	194	194	195	195	195	195	195	194	194	194	194	194	194	194	195	195	195
10	192	192	193	193	194	194	195	194	194	193	193	192	192	192	193	193	194	194	195
15	188	189	189	191	191	192	193	192	191	191	189	189	188	189	189	191	191	192	193
20	182	184	185	186	188	189	189	189	188	186	185	184	182	184	185	186	188	189	189
25	176	178	179	181	182	184	184	184	182	181	179	178	176	178	179	181	182	184	184
30	167	170	172	174	176	177	178	177	176	174	172	170	167	170	172	174	176	177	178
35	158	160	163	166	168	169	170	169	168	166	163	160	158	160	163	166	168	169	170
40	147	150	153	156	158	160	161	160	158	156	153	150	147	150	153	156	158	160	161
45	134	138	141	145	147	149	151	149	147	145	141	138	134	138	141	145	147	149	151
50	121	125	128	132	135	137	139	137	135	132	128	125	121	125	128	132	135	137	139
55	106	110	114	119	121	124	126	124	121	119	114	110	106	110	114	119	121	124	126
60	89.8	94.6	99.1	104	107	110	111	110	107	104	99.1	94.6	89.8	94.6	99.1	104	107	110	111
65	72.9	77.9	82.7	87.7	91.1	94.2	95.9	94.2	91.1	87.7	82.7	77.9	72.9	77.9	82.7	87.7	91.1	94.2	95.9
70	54.9	60.4	65.6	70.7	74.5	77.8	79.6	77.8	74.5	70.7	65.6	60.4	54.9	60.4	65.6	70.7	74.5	77.8	79.6
75	37.3	42.8	48.1	53.6	57.4	60.8	62.7	60.8	57.4	53.6	48.1	42.8	37.3	42.8	48.1	53.6	57.4	60.8	62.7
80	20.9	26.0	31.2	36.7	40.6	43.7	45.5	43.7	40.6	36.7	31.2	26.0	20.9	26.0	31.2	36.7	40.6	43.7	45.5
85	7.98	11.6	16.7	21.7	25.3	28.3	29.4	28.3	25.3	21.7	16.7	11.6	7.98	11.6	16.7	21.7	25.3	28.3	29.4
90	0.81	3.33	6.72	10.3	13.4	15.9	17.0	15.9	13.4	10.3	6.72	3.33	0.81	3.33	6.72	10.3	13.4	15.9	17.0
95	0.37	0.45	0.93	3.27	5.50	6.32	8.92	6.32	5.50	3.27	0.93	0.45	0.37	0.45	0.93	3.27	5.50	6.32	8.92
100	0.59	0.56	0.74	1.24	2.40	3.39	5.07	3.39	2.40	1.24	0.74	0.56	0.59	0.56	0.74	1.24	2.40	3.39	5.07
105	0.80	0.77	0.56	0.63	1.13	1.37	2.82	1.37	1.13	0.63	0.56	0.77	0.80	0.77	0.56	0.63	1.13	1.37	2.82
110	1.03	0.99	0.76	0.78	0.68	0.76	1.05	0.76	0.68	0.78	0.76	0.99	1.03	0.99	0.76	0.78	0.68	0.76	1.05
115	1.25	1.21	1.00	1.02	0.90	0.96	1.09	0.96	0.90	1.02	1.00	1.21	1.25	1.21	1.00	1.02	0.90	0.96	1.09
120	1.42	1.42	1.24	1.24	1.13	1.20	1.18	1.20	1.13	1.24	1.24	1.42	1.42	1.42	1.24	1.24	1.13	1.20	1.18
125	1.60	1.60	1.42	1.46	1.36	1.41	1.27	1.41	1.36	1.46	1.42	1.60	1.60	1.60	1.42	1.46	1.36	1.41	1.27
130	1.75	1.76	1.62	1.68	1.62	1.65	1.49	1.65	1.62	1.68	1.62	1.76	1.75	1.76	1.62	1.68	1.62	1.65	1.49
135	1.87	1.91	1.78	1.88	1.84	1.86	1.73	1.86	1.84	1.88	1.78	1.91	1.87	1.91	1.78	1.88	1.84	1.86	1.73
140	1.95	2.03	1.98	2.05	1.99	2.04	1.90	2.04	1.99	2.05	1.98	2.03	1.95	2.03	1.98	2.05	1.99	2.04	1.90
145	2.06	2.17	2.12	2.23	2.15	2.20	2.02	2.20	2.15	2.23	2.12	2.17	2.06	2.17	2.12	2.23	2.15	2.20	2.02
150	2.17	2.31	2.24	2.39	2.31	2.35	2.17	2.35	2.31	2.39	2.24	2.31	2.17	2.31	2.24	2.39	2.31	2.35	2.17
155	2.30	2.47	2.40	2.53	2.50	2.46	2.34	2.46	2.50	2.53	2.40	2.47	2.30	2.47	2.40	2.53	2.50	2.46	2.34
160	2.42	2.57	2.52	2.64	2.56	2.55	2.49	2.55	2.56	2.64	2.52	2.57	2.42	2.57	2.52	2.64	2.56	2.55	2.49
165	2.54	2.70	2.63	2.74	2.66	2.69	2.63	2.69	2.66	2.74	2.63	2.70	2.54	2.70	2.63	2.74	2.66	2.69	2.63
170	2.74	2.84	2.78	2.87	2.79	2.81	2.78	2.81	2.79	2.87	2.78	2.84	2.74	2.84	2.78	2.87	2.79	2.81	2.78
175	2.90	2.98	2.91	3.02	2.96	2.96	2.96	2.96	2.96	3.02	2.91	2.98	2.90	2.98	2.91	3.02	2.96	2.96	2.96
180	3.04	3.04	3.03	3.08	3.13	3.13	3.19	3.13	3.13	3.08	3.03	3.04	3.04	3.04	3.03	3.08	3.13	3.13	3.19

C Range: 0 - 90DEG
 C Interval: 15.0DEG
 Test Speed: HIGH
 Temperature:25.3DEG
 Operators:
 Test Date:2019-01-11

γ Range: 0 - 180DEG
 γ Interval: 1.0DEG
 Test System:EVERFINE GO-2000A_V1 SYSTEM V2.0.362
 Humidity:65.0%
 Test Distance:12.226m [K=1.0000]
 Remarks:

LUMINOUS DISTRIBUTION INTENSITY DATA

NAME: FL	TYPE:	WEIGHT:
SPEC.:LWF-132400W96-LP	DIM.: L=1M	SERIAL No.:
MFR.: LEDWIDE LIGHTING CO., LTD	SUR.:0.008*1	Shielding Angle:

Table--2

UNIT: cd

C(DEG) γ (DEG)	285	300	315	330	345														
0	194	194	194	194	195														
5	195	195	194	194	194														
10	194	194	193	193	192														
15	192	191	191	189	189														
20	189	188	186	185	184														
25	184	182	181	179	178														
30	177	176	174	172	170														
35	169	168	166	163	160														
40	160	158	156	153	150														
45	149	147	145	141	138														
50	137	135	132	128	125														
55	124	121	119	114	110														
60	110	107	104	99.1	94.6														
65	94.2	91.1	87.7	82.7	77.9														
70	77.8	74.5	70.7	65.6	60.4														
75	60.8	57.4	53.6	48.1	42.8														
80	43.7	40.6	36.7	31.2	26.0														
85	28.3	25.3	21.7	16.7	11.6														
90	15.9	13.4	10.3	6.72	3.33														
95	6.32	5.50	3.27	0.93	0.45														
100	3.39	2.40	1.24	0.74	0.56														
105	1.37	1.13	0.63	0.56	0.77														
110	0.76	0.68	0.78	0.76	0.99														
115	0.96	0.90	1.02	1.00	1.21														
120	1.20	1.13	1.24	1.24	1.42														
125	1.41	1.36	1.46	1.42	1.60														
130	1.65	1.62	1.68	1.62	1.76														
135	1.86	1.84	1.88	1.78	1.91														
140	2.04	1.99	2.05	1.98	2.03														
145	2.20	2.15	2.23	2.12	2.17														
150	2.35	2.31	2.39	2.24	2.31														
155	2.46	2.50	2.53	2.40	2.47														
160	2.55	2.56	2.64	2.52	2.57														
165	2.69	2.66	2.74	2.63	2.70														
170	2.81	2.79	2.87	2.78	2.84														
175	2.96	2.96	3.02	2.91	2.98														
180	3.13	3.13	3.08	3.03	3.04														

C Range: 0 - 90DEG
 C Interval: 15.0DEG
 Test Speed: HIGH
 Temperature:25.3DEG
 Operators:
 Test Date:2019-01-11

γ Range: 0 - 180DEG
 γ Interval: 1.0DEG
 Test System:EVERFINE GO-2000A_V1 SYSTEM V2.0.362
 Humidity:65.0%
 Test Distance:12.226m [K=1.0000]
 Remarks: